

---

# *Madison County Coin Club Newsletter*

---

**Volume 6, Issue 7**

**Founded 2001**

**August, 2006**

**ANA Member #C-195870 (Region 20, AL & GA)**

**ANS & GNA Member**

**Meeting:** Thomas W. Davidson, Sr. Senior Center

**Meeting Time:** 6:30-8:30 p.m.

**Location:** 2200 Drake Ave. SW  
Huntsville, AL 35805  
256-881-6268

**Meeting Dates:** 4<sup>th</sup> Monday  
of every month, except  
May & December

**Web:** <http://mccc.anaclubs.org/>

**Editor:** Harold Fears

**ANA Club Rep.:** Jon Stimpson

## President's Report

By: Harold Fears

As we all know there are almost as many different ways of collecting coins as there are collectors. Some of us specialize in some area of collecting, such as currency, coins with themes, foreign coins, or U.S. type sets. At our July meeting, Bob Jaques shared his collection of Japanese Invasion Money. His collection was most impressive considering the time, effort, and cost in acquiring his set. I'm sure you have something to share. So why not bring something to the next meeting?



*Bob, receiving his educational award for his Japanese Invasion Money presentation.*



*Kaylee displays her 5 denari coin from Macedonai.*

## August Meeting Notice

The August meeting will be held Monday the 28 at the Senior Center in Huntsville in the Ceramics Room. Doors open at 6:00 p.m. **Dwight Maxwell** will be our speaker and his topic is "The effects of inflation on 20th century world coins and currency."

## Indian Head \$5

The \$5 Indian gold coins were produced by the United States government between 1908 and 1929. Indian head gold coins are different than most other U.S. gold coins in that the (incuse) design is pressed down into the background of the gold rather than raised up.



## Pine Tree Shillings

In 1652, John Hull began striking silver coins bearing an image of a pine tree on the obverse and the date and denomination on the reverse. The Massachusetts "Pine Tree" coins are known in several denominations and various varieties.



## Japanese Invasion Money

By Bob Jaques



*A Japanese invasion 10 rupees note for Burma.*

In WWII, Japan wanted to free the Pacific of European and American influence and unite the Asian nations into a greater East-Asian co-prosperity sphere. Towards this goal, the Japanese issued "Japanese Invasion Money" (or "JIM", to create economic control of the areas it conquered. The notes were tied to the yen at par (e.g.: 1 yen=1 peso) except for the Oceania pound, which equaled 10 yen. JIM was issued for:

- Burma (cents and rupees),
- Malaya (cents and dollars),
- Netherlands East Indies (cent and gulden),
- British Oceania (shillings and pounds), and
- Philippines (centavos and pesos)

Many of these notes are easily located and are very inexpensive (with most notes costing less than \$15). However, there are also some issues that are difficult and relatively expensive to collect.



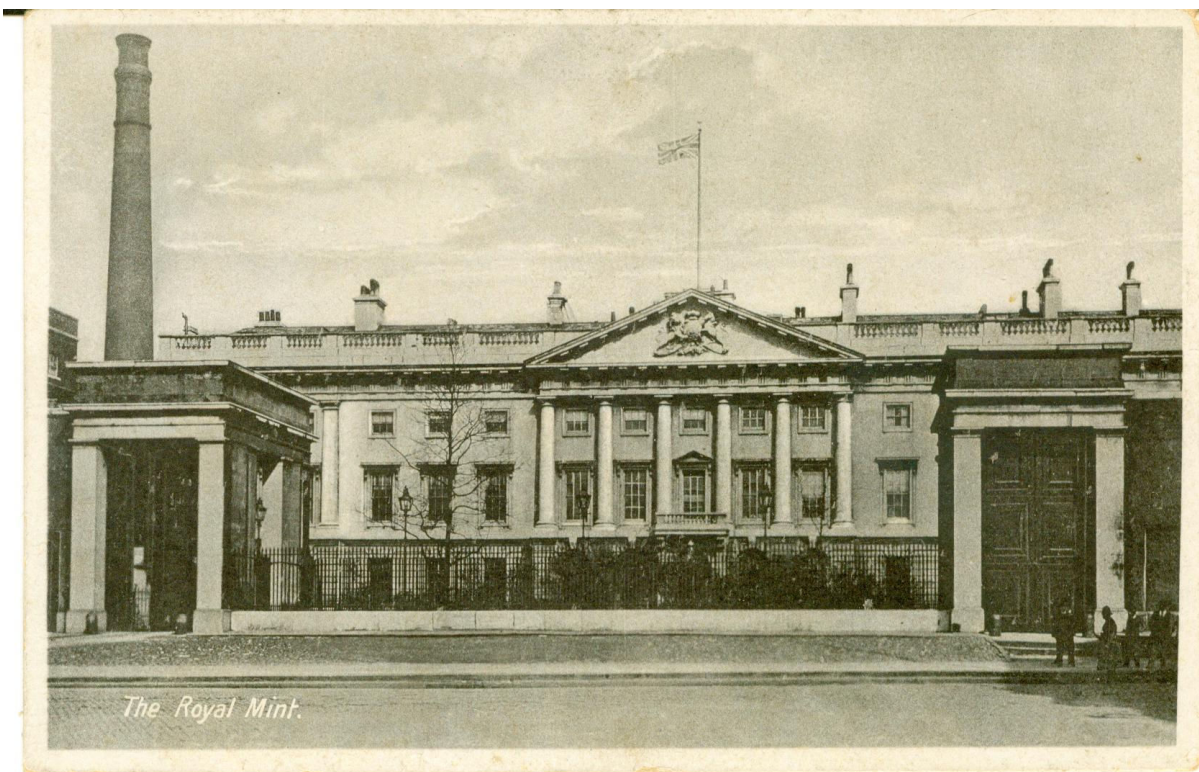
*A Japanese invasion 5 centavos note for the Philippines.*



*A Japanese invasion \$10 note for Malaya.*

## 1906 British Royal Mint Post Cards

Over the next few issues, I will be sharing details about a set of post cards issued around 1906 for the British Royal Mint. The first one is titled “The Royal Mint.” The mint in London first became a single institution in 886, during the reign of Alfred the Great, but was only one of many mints throughout England. By about 1279 it had moved to the Tower of London. In 1811 the mint moved out of the Tower to a new factory on Tower Hill, and in 1967 the building of a new mint began in its current site in Llantrisant, Wales. This post card depicts the Royal Mint at Tower Hill.

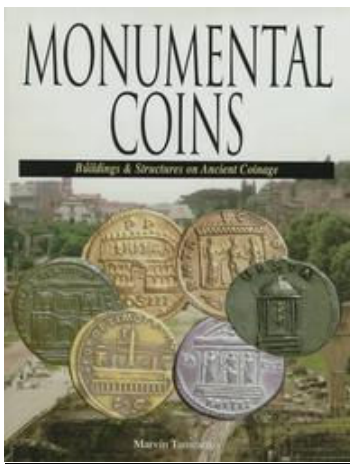


*A postcard (circa 1906) depicting the British Royal Mint.*

## Officers

President	<b>Harold Fears</b>
Vice-President	<b>Jon Stimpson</b>
Secretary	<b>open</b>
Treasurer	<b>Michael Campbell</b>
Board Member	<b>Ray Norwood</b>
Librarian	<b>Mark Steuer</b>

### From our Library



Book Review: *Monumental Coins: Building and Structures on Ancient Coinage* by Marving Tameanko.

This book offers an introduction to the coins of the ancient world and to the architectural wonders portrayed on those coins. Many of these buildings have crumbled or disappeared, but the coins that honor them are still available. A comprehensive gallery of actual coin photos is augmented by line drawings of coins that reveal fine structural details.

Enhance your expertise as a collector of coins of antiquity; unlock the architectural genius of past civilizations; gain historical insight into a vanished culture, *Monumental Coins* is your passport for a journey that you won't soon forget.

### Upcoming Meetings for 2006

ADMIT ONE

August 28 - Dwight Maxwell presents "The effects of inflation on 20th century world coins and currency"

ADMIT ONE

September 25 – Computers by Mark Larson

ADMIT ONE

October 23

ADMIT ONE

November 27 - Pot Luck - Bourse Night

ADMIT ONE

ADMIT ONE

### Questions or Comments

Please call Harold: 256-881-6268

E-mail: [hkfears@knology.net](mailto:hkfears@knology.net)

**Madison County Coin Club**  
**14047 Camden Circle**  
**Huntsville, AL 35803**

<http://mccc.anaclubs.org/>